

# Sean Roger: Why LICs deserve a place in income portfolios

By Perpetual Asset Management

25 July 2025



## Improving user experience

We use Microsoft Clarity to understand how you use our website to improve your experience. See our [Privacy Policy](#) for details

- Listed investment companies can pay fully franked dividends
- Income opportunities are narrowing as rates fall
- Find out about [Perpetual Equity Investment Company \(ASX:PIC\)](#)
- Browse all [Perpetual's Australian share funds](#)

Listed investment companies (LICs) are emerging as an important option for income-focused investors as traditional avenues for generating yield come under pressure, says Perpetual's Sean Roger.

Income investors have been spoiled for choice in recent years, with elevated term deposit rates, traditional dividend stocks and bank hybrid securities all delivering yield without excessive risk.

But as interest rates decline and equity markets continue to rally, savings accounts are becoming less attractive, and dividend yields are compressing.

Meanwhile the staged closure of the bank hybrid market is removing another important source of income.

"Investors used to be able to get attractive yields at reasonable valuations. But the market has risen to a point where investors are having to take significant capital risk," says Roger.

LICs offering strong, fully franked yields look increasingly attractive as a result, he says.

"Wesfarmers has recently traded at a 2.5 per cent dividend yield, similar to CBA, whereas they used to be in the 4-5 per cent range. Telstra's yield has come down below 4 per cent.

"There was a point where you could get 4 per cent-plus term deposit rates.

"The pace that interest rates come down is still up for debate. But the general direction, both here and in the US, is that we will continue to get rate reduction which ultimately will flow through to lower term deposit rates.

"Meanwhile, just over \$40 billion of hybrid capital in the market today is being phased out.

"Hybrids are a very popular place for retail and institutional capital to get an attractive yield. That capital is going to be looking for alternate places to go for that relatively defensive yield."

---

## Improving user experience

We use Microsoft Clarity to understand how you use our website to improve your experience. See our [Privacy Policy](#) for details

A banner image featuring a background of pink and red chrysanthemum flowers. A large, vibrant blue dahlia flower is positioned on the right side. The text 'ASX:PIC' is displayed in white, bold, sans-serif font in the upper right corner. A dark blue rectangular box with a white border is overlaid on the left side, containing the text 'Investing for income and growth?' and a button labeled 'Discover PIC'.

## Investing for income and growth?

Discover PIC

### LIC advantages

Unlike unit trusts, which must distribute all income each year, LICs are structured as corporations which allows them to retain earnings and smooth dividend payments over time.

“The company structure allows flexibility around distribution pay-out ratios, which enables LIC boards to manage distributions in a way that can be a lot more consistent than unit trusts, which are mechanically forced to pay out a certain amount of money depending on profit realised,” he says.

LICs can also attach franking credits to distributions because they pay tax on profits at the company level.

“The company structure means the income component of the return for investors can be done in a very tax-efficient way for investors,” says Roger.

Franking credits can be particularly valuable for investors in low-tax environments such as self-managed superannuation funds. For some, it can even result in tax refunds on top of dividend income.

### Finding value in an expensive market

---

#### Improving user experience

We use Microsoft Clarity to understand how you use our website to improve your experience. See our Privacy Policy for details

“Through having a value and quality lens, we’re able to still find opportunities in the market where we can get access to high-quality companies that may have short-term headwinds.”

That discipline allows portfolios to maintain yield without chasing overstretched names, and to position for recovery in undervalued sectors.

### **Discounts to NTA**

Many LICs are also trading below their net tangible asset (NTA) value – offering investors the chance to access underlying portfolios at a discount.

Roger notes that sector-wide discounts have widened in recent years, partly because high interest rates made alternatives such as term deposits and hybrids more attractive.

As those options fade, the relative appeal of consistent, fully franked dividends may rise. That means there is potential for discounts to narrow.

### **About Sean Roger and Perpetual Equity Investment Company (ASX:PIC)**

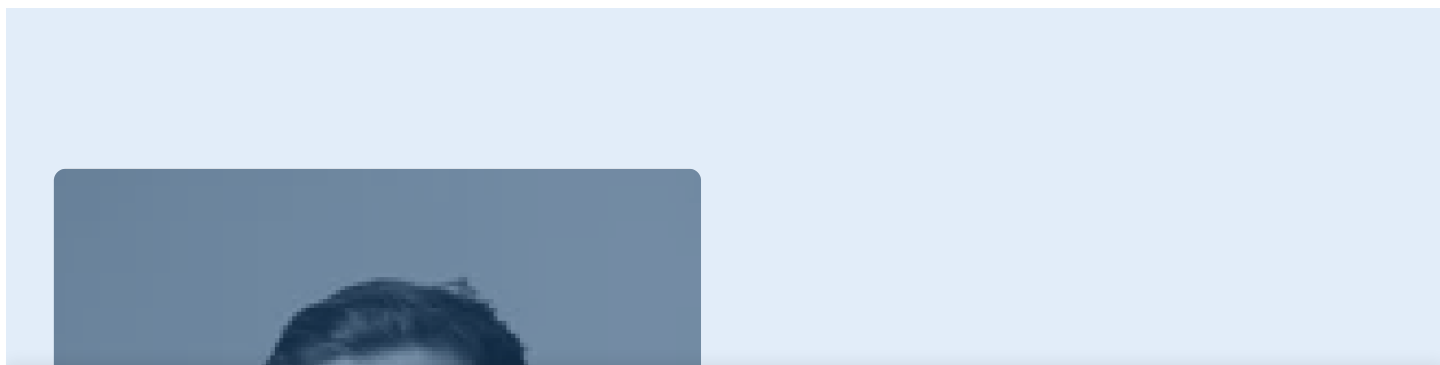
Sean is co-portfolio manager for [Perpetual Equity Investment Company \(ASX:PIC\)](#) as well as Perpetual SHARE-PLUS Long-Short Fund and Perpetual Pure Equity Alpha Fund.

Perpetual is a pioneer in Australian quality and value investing, with a heritage dating back to 1886.

We have a track record of contributing value through “active ownership” and deep research.

Browse [Perpetual's Australian equities capabilities](#)

Want to know more? [Contact a Perpetual account manager](#)



### **Improving user experience**

We use Microsoft Clarity to understand how you use our website to improve your experience. See our Privacy Policy for details



This information was prepared by Perpetual Investment Management Limited (PIML) ABN 18 000 866 535, AFSL 234426. PIML is the manager for the Perpetual Equity Investment Company Limited (Company) (ASX: PIC) ACN 601 406 419. It is general information only and is not intended to provide you with financial advice. You should consider, with a financial adviser, whether the information is suitable for your circumstances. This information is in summary form and is not necessarily complete. It should be read together with other announcements for the Company lodged with the ASX, which are available at [www.asx.com.au](http://www.asx.com.au).

Neither the Company, PIML nor any company in the Perpetual Group guarantees the performance of, or any return on an investment made in, the Company. Perpetual Group means Perpetual Limited ABN 86 000 431 827 and its subsidiaries. Past performance is not indicative of future performance. All investing involves risk including the possible loss of principal.

---

### **Improving user experience**

We use Microsoft Clarity to understand how you use our website to improve your experience. See our Privacy Policy for details